

Information Technology

Communications Technology | Information Systems Development

GO PLACES

www.aoraki.ac.nz





UPGRADE YOUR FUTURE WITH INFORMATION TECHNOLOGY

Why Choose a Career in Information Technology?

IT professionals are in ever-increasing demand in New Zealand and worldwide.

The long term New Zealand Skill Shortage List shows ICT, Electronics and Telecommunications as areas of greatest need. Keep up with constantly changing technology and join an industry in high demand in New Zealand and around the world. Computer and IT skills are paramount in today's society and pairing a qualification in IT with your current study or employment can increase your career success.

IT professionals are in ever-increasing demand in New Zealand and worldwide. IT professionals in New Zealand have the highest median salary of any profession* and are consistently listed on the New Zealand Skills Shortage list.

- Start your studies at home, then pathway to a degree at CPIT
- Students have to option to and are encouraged to apply and sit the Highly regarded, international Redhat Linux Certification and Microsoft Certification qualifications
- Real work experience opportunities

Through the use of our modern facilities and guidance from industry current tutors gain a career in IT support, network support, software development, software support, service desk operation, network technician or administrative assistance. Upgrade your future with internationally recognised qualifications that are in demand all over the world.

*Trade Me Jobs Salary Survey 2010

Why Study Information Technology at Aoraki Polytechnic?

Globally Relevant Qualifications – The ICT industry prefers graduates that hold international certifications. Embedded in Aoraki's Information Technology diplomas are the highly regarded, international Redhat Linux Certification and Microsoft Certification.

Real World Experience – Our programmes include real work experience opportunities, for example learning basic programming, building your own computer, multimedia website, installation of operation systems and applications and even overloading and crashing your website.

Purpose-Built Facilities and Equipment – Aoraki has full Mac and PC Suites as well as hardware labs available to students.

Industry Connected Tutors – Our tutors are industry professionals bringing many years of experience and their connections with industry to the classroom so you get skills and knowledge required for your career success.

Support for Your Learning – Our qualified and experienced tutors and small class sizes mean that there are plenty of opportunities for individual attention and support for your learning so you'll get the most out of your study.



PATHWAY WITH AORAKI

Education Pathway

AORAKI POLYTECHNIC

CERTIFICATE Level 4

Certificate in Information and Communications Technology (Level 4)

DIPLOMA Level 5-6

Diploma in Information Systems Development (Level 5)
Diploma in Information and Communications Technology (Level 6)

DEGREE Level 7
CPIT

Careers

Certificate in Information and Communications Technology (Level 4)

Page 5

- Entry level service technician or help desk

Diploma in Information Systems Development (Level 5)

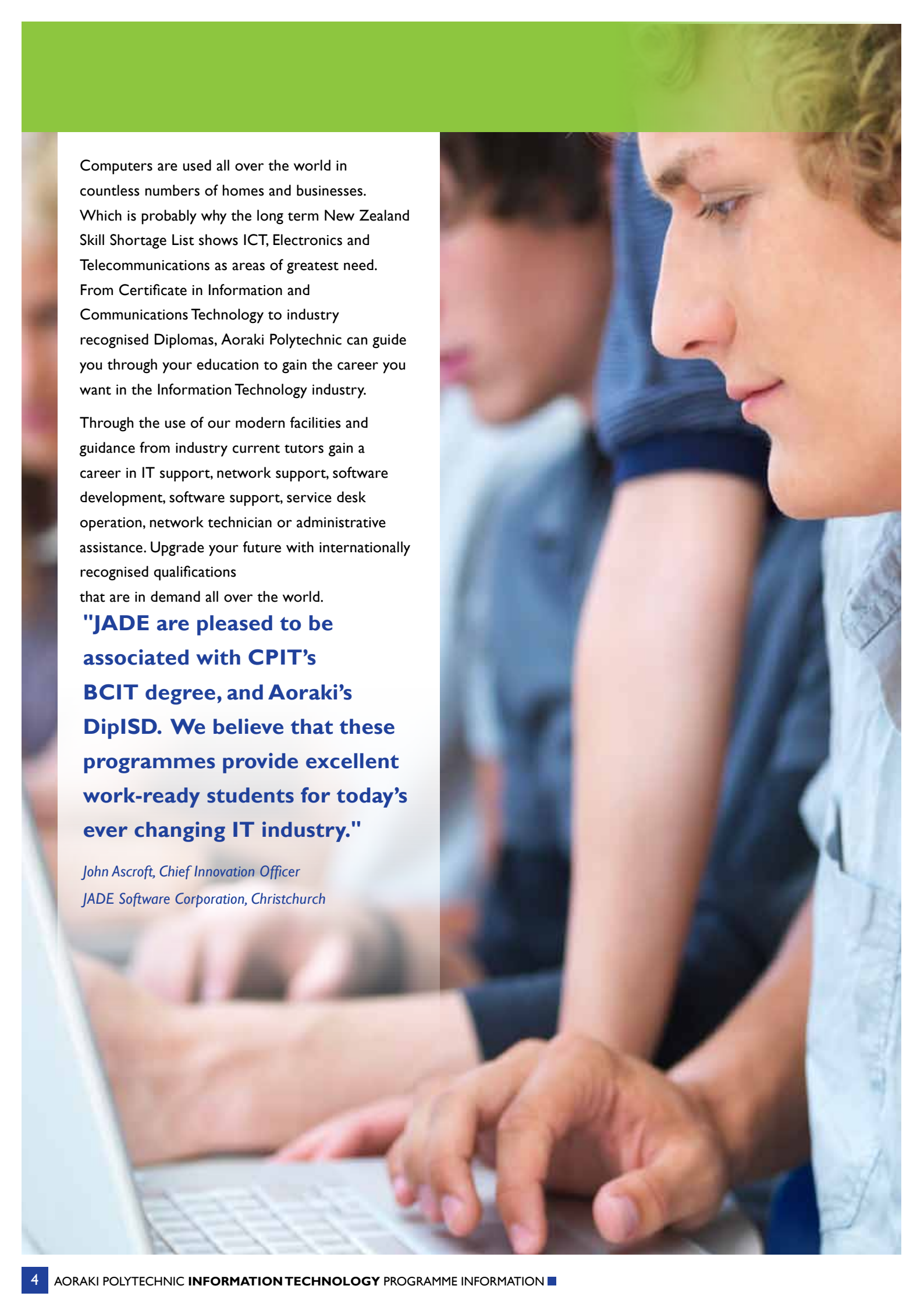
Page 7

- Support software development teams

Diploma in Information and Communications Technology (Level 6)

Page 9

- Service desk operator
- Network technician or administrator
- Assistant software developer
- Systems design, installation and support



Computers are used all over the world in countless numbers of homes and businesses. Which is probably why the long term New Zealand Skill Shortage List shows ICT, Electronics and Telecommunications as areas of greatest need. From Certificate in Information and Communications Technology to industry recognised Diplomas, Aoraki Polytechnic can guide you through your education to gain the career you want in the Information Technology industry.

Through the use of our modern facilities and guidance from industry current tutors gain a career in IT support, network support, software development, software support, service desk operation, network technician or administrative assistance. Upgrade your future with internationally recognised qualifications that are in demand all over the world.

"JADE are pleased to be associated with CPIT's BCIT degree, and Aoraki's DipISD. We believe that these programmes provide excellent work-ready students for today's ever changing IT industry."

*John Ascroft, Chief Innovation Officer
JADE Software Corporation, Christchurch*



INFORMATION TECHNOLOGY

Certificate in Information and Communications Technology

Starts: February or July
Level: 4
Duration: 17 weeks full-time, part-time options available
Campus: Timaru, Ashburton and Oamaru

IT professionals are in ever-increasing demand in New Zealand and worldwide. It is important to have a solid foundation in software and hardware development and support to develop a successful career in this industry. Having formal training is imperative to competing for entry-level IT support positions and further study is vital for higher-level positions.

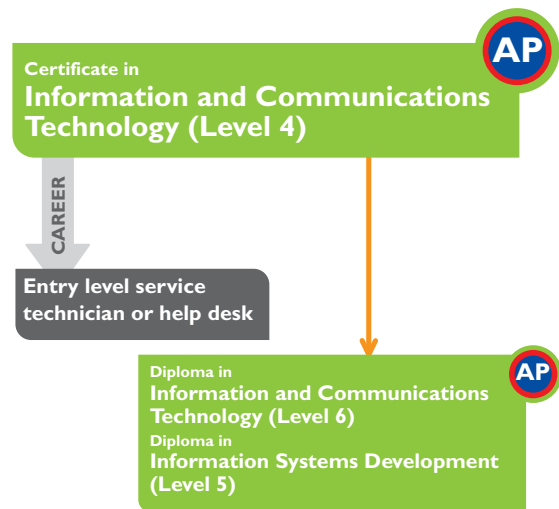
This certificate programme is a solid introduction to the skills required to further your education in Information and Communications Technology. You may also utilise this qualification in a career related to IT or where IT knowledge is essential.

Complete this certificate and then learn more advanced skills on our Diploma in Information and Communications Technology programme or if you want to take the next step to a degree, complete our Diploma in Information Systems Development, equivalent to the first year of the CPIT Bachelor of Information and Communications Technology.

What will this programme cover?

- The hardware, operating systems and peripherals of a computing system
- Software applications
- Data transmission
- Internet technologies
- Ethics and safety
- Communication in an ICT environment
- Time management for the workplace
- Problem solving

Careers and further study



 Aoraki Polytechnic Programme

What do you need to apply?

It is desirable you have at least 36 credits in NCEA Level 1 including 12 credits in English and 12 credits in Maths or successful completion of a 60 credit Level 3 tertiary qualification in computing.

If you don't have the entry criteria, talk to us about whether you can use your equivalent skills and knowledge to see if this is the right programme for you.

International Students

Students for whom English is their second language, an overall IELTS score of 5.5 or a TOEFL score of 525 is required unless otherwise stated.

Programme Recognition

This programme is accredited by NZQA.

www.aoraki.ac.nz
0800 426 725

Note: All programmes subject to internal and external approval





INFORMATION TECHNOLOGY

Diploma in Information Systems Development (Level 5)

Starts: February or July
Level: 5
Duration: 34 weeks full-time, part-time options available
Campus: Timaru

Some of the most in-demand occupations in New Zealand currently are those in the IT sector. Qualified experts are sought after and having formal qualifications in IT appeals to potential employers looking for employees who can take immediate responsibility for projects with minimal initial training.

On this diploma programme you will gain skills in software design and development for desktop and web-based information systems, along with an overview of information systems architecture.

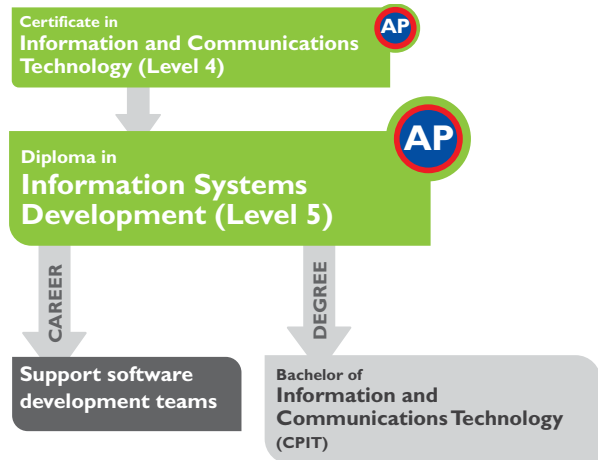
This qualification is equivalent to the first year of the Christchurch Polytechnic Institute of Technology (CPIT) Bachelor of Information and Communications Technology degree, so you can begin your studies at Aoraki Polytechnic and use your credits to guarantee a place on this popular degree.

What will this programme cover?

- Programming using JADE
- Systems design using UML
- Web site development
- Multimedia for websites and CD/DVD
- Computer architecture
- Software skills
- Communication for the IT environment

Note: All programmes subject to internal and external approval

Careers and further study



 Aoraki Polytechnic Programme

What do you need to apply?

For entry it is desirable you have a minimum of 42 NCEA credits at Level 3, as follows: at least 14 credits in a 'mathematics-rich' subject (mathematics, physics, statistics, accounting); at least 14 credits in an 'English language rich' subject (english, history, art history, classics, geography, economics) and an additional 14 credits across any subjects, subject areas or domains, including unit standards

Alternatively, you may have successfully completed a 60 credit (minimum) Level 4 tertiary qualification in computing.

If you don't have the entry criteria, talk to us about whether you can use your equivalent skills and knowledge to see if this is the right programme for you.

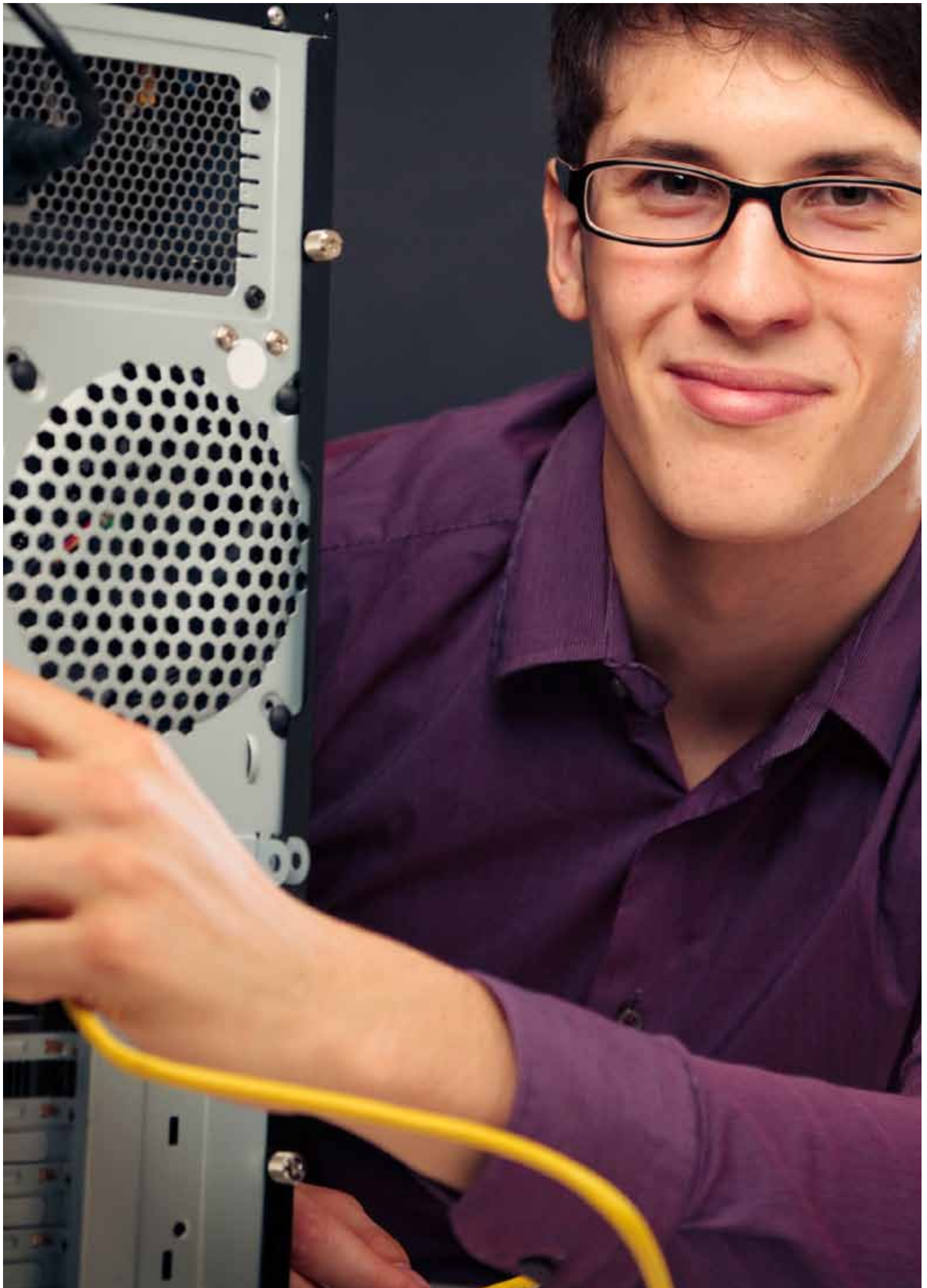
International Students

Students for whom English is their second language, an overall IELTS score of 5.5 or a TOEFL score of 525 is required unless otherwise stated.

Programme Recognition

This programme is accredited by NZQA.

www.aoraki.ac.nz
0800 426 725





INFORMATION TECHNOLOGY

Diploma in Information and Communications Technology

Specialised pathways; IT Support, Network Support or Software Development.

- Starts:** February or July
- Level:** 6
- Duration:** 2 years full-time, part-time options available
- Campus:** Timaru campus. *Some modules may also be delivered in Ashburton and Oamaru.*

If you are interested in moving straight into an IT role then this diploma will give you all the skills you need to convince employers of your technical skills. You will be capable of the ongoing responsibilities of a computing professional for the administration, development and ongoing support of Information Technology infrastructure.

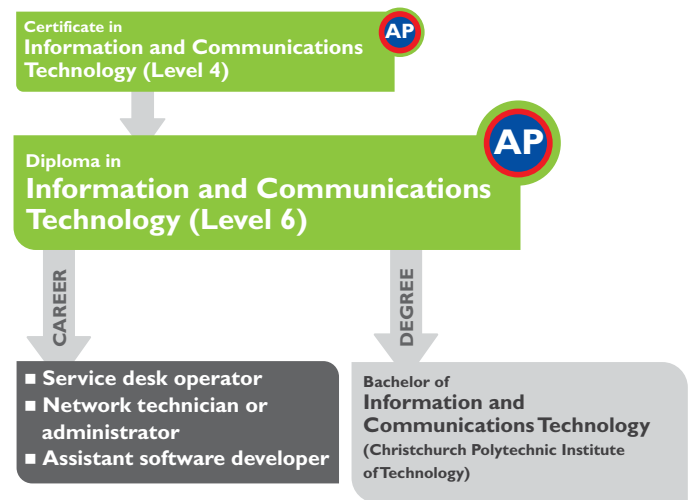
Complete this Diploma with access to your own workspace and computer at Aoraki Polytechnic. Site visits during the course give you the chance to grasp the running and dynamics of a local IT business and gain valuable contacts in the industry. Smaller class sizes enable more one on one time with tutors and the flexibility to structure projects around your own interests in IT.

What will this programme cover?

- The knowledge, technical proficiency and expertise to troubleshoot and solve IT related problems.
- Self-directed problem solving techniques.
- Use of IT tools to solve business related problems.
- Generating and evaluating solutions for a range of given IT challenges.
- Identifying problems and using problem solving skills to define scope.
- Using a variety of tools for conducting research and communication.
- Students will choose one of three specialised pathways; IT Support, Network Support or Software Development.

www.aoraki.ac.nz
0800 426 725

Careers and further study



Aoraki Polytechnic Programme

What do you need to apply?

For entry it is desirable you have a minimum of 42 NCEA credits at Level 3, made up of 14 credits in a 'mathematics-rich' subject (Mathematics, Physics, Statistics, Accounting), 14 credits in an 'English language rich' subject (English, History, Art History, Classics, Geography, Economics) and an additional 14 credits across any subjects, subject areas or domains, including unit standards.

Alternatively, you may apply for entry with a successfully completed 60 credit (minimum) Level 4 tertiary qualification in computing such as our Certificate in Information and Communications Technology.

If you don't have the entry criteria, talk to us about whether you can use your equivalent skills and knowledge to see if this is the right programme for you.

International Students

Students for whom English is their second language, an overall IELTS score of 5.5 or a TOEFL score of 500 is required unless otherwise stated.

Programme Recognition

This programme is accredited by NZQA.

Note: All programmes subject to internal and external approval



supporting your success

At Aoraki Polytechnic, you can choose from a wide range of courses and programmes at Certificate and Diploma level designed to help you achieve your career goals and support your success.

Education Pathways

Aoraki offers a range of pathway opportunities to higher study. Many of our qualifications have pathways and cross credits to degrees at our respected partner universities and polytechnics.

Career Success

Aoraki is committed to providing innovative and vocationally relevant qualifications and listening to the needs of businesses and community, ensuring our programmes are well supported and have excellent employment outcomes.

Reasons to study at Aoraki Polytechnic

- Friendly and supportive learning environment
- Pathways to Degrees
- Practical skills using industry relevant equipment
- Excellent employment outcomes
- Internationally recognised qualifications
- Strong links with industry
- Highly trained tutors who have a wide range of experience in their respective areas of expertise



ENROL NOW

STEPS TO ENROLMENT

1 Step 1. Enrolment Form

To apply for a programme of study you are required to complete an enrolment form.

You can fill out an enrolment form online at www.aoraki.ac.nz/enrolment

Alternatively you can request a form by contacting our student advisors on 0800 426 725

We take applications right up until the programme commences.

Refer to the Guide to Enrolment for additional information available online www.aoraki.ac.nz

2 Step 2. Entry Criteria

You may be invited to attend an interview or information sharing meeting with the programme tutor/staff to ensure you meet programme entry criteria.

You may also view the facilities and discuss the programme in more detail.

You are welcome to bring family or whanau support.

If all criteria are met we'll send you a letter of acceptance offering you a place on the programme.

Some programmes may "wait list" where applications exceed enrolment.

3 Step 3. Enrolment

Along with your acceptance letter we'll send you any additional information available at the time.

To enrol:

- Provide enrolment documentation as detailed in the letter.
- Return everything to us either by post or in person together with the \$100 non-refundable deposit.

Career Advice

Friendly, helpful careers and study advice

Our Student Advisors are your contact for careers advice and any information relating to career options and study at Aoraki Polytechnic.

Phone: 0800 426 725

Email: study@aoraki.ac.nz

Mature students

Applications for mature students (over 20 years of age) are welcomed.

Special Admission

Students who do not meet the entry requirements (or equivalent) may apply to the Head of School for special admission. Admission under these circumstances will be made at the discretion of the Head of School.

Recognition of Prior Learning

Aoraki Polytechnic has Recognition of Prior Learning (RPL) processes to assess relevant, current skills and knowledge gained from previous study and learning. Please contact Aoraki Polytechnic if you think you might have previous learning that could be credited towards an Aoraki Polytechnic qualification.

Verification of Citizenship/Permanent Residency

For information about the documentation required for verification of Citizenship or Permanent Residency, please refer to the Aoraki Polytechnic Guide to Enrolment.

StudyLink

For Student Loan and/or Allowance information please contact StudyLink on 0800 88 99 00 or visit the website www.studylink.govt.nz

International Code of Practice

CODE Aoraki Polytechnic has agreed to observe and be bound by the Code of Practice for the Pastoral Care of International Students. Copies of the Code are available from the New Zealand Ministry of Education website at www.minedu.govt.nz/international.

IMMIGRATION Full details of immigration requirements, advice on rights to employment in New Zealand while studying, and reporting requirements are available from Immigration New Zealand, and can be viewed on their website at www.immigration.govt.nz.

ELIGIBILITY FOR HEALTH SERVICES Most international students are not entitled to publicly funded health services while in New Zealand. If you receive medical treatment during your visit, you may be liable for the full costs of that treatment. Full details on entitlements to publicly funded health services are available through the Ministry of Health, and can be viewed on their website at www.moh.govt.nz.

ACCIDENT INSURANCE The Accident Compensation Corporation provides accident insurance for all New Zealand citizens, residents, and temporary visitors to New Zealand, but you may still be liable for all other medical and related costs. Further information can be viewed on the ACC website at www.acc.co.nz

MEDICAL AND TRAVEL INSURANCE International students (including group students) must have appropriate and current medical and travel insurance while in New Zealand.

Disclaimer

Every attempt is made to ensure this brochure is correct at time of printing (January 2012). Aoraki Polytechnic reserves the right to alter programme start dates or amend programme content as required. Commencement of all programmes is subject to sufficient enrolments and gaining internal and external approvals. Fees may also be subject to some alteration prior to commencement of the programme. The information in this brochure is for domestic students and New Zealand residents only. Please contact us for information about international enrolments.



Private Bag 902, Timaru 7940, New Zealand
International Phone: +64 3 687 1800

0800 426 725 | study@aoraki.ac.nz | www.aoraki.ac.nz
TIMARU | CHRISTCHURCH | ASHBURTON | OAMARU | DUNEDIN



Follow us on Facebook
www.facebook.com/aorakipolytechnic

